

PART OF THE E.1/2, SEC. 8, T.5N., R.2W., S.L.B. & M.
WEST HAVEN FARM SUBDIVISION - PHASE 2

IN WEST HAVEN CITY

TAXING UNIT: 278,324

SCALE 1" = 100'

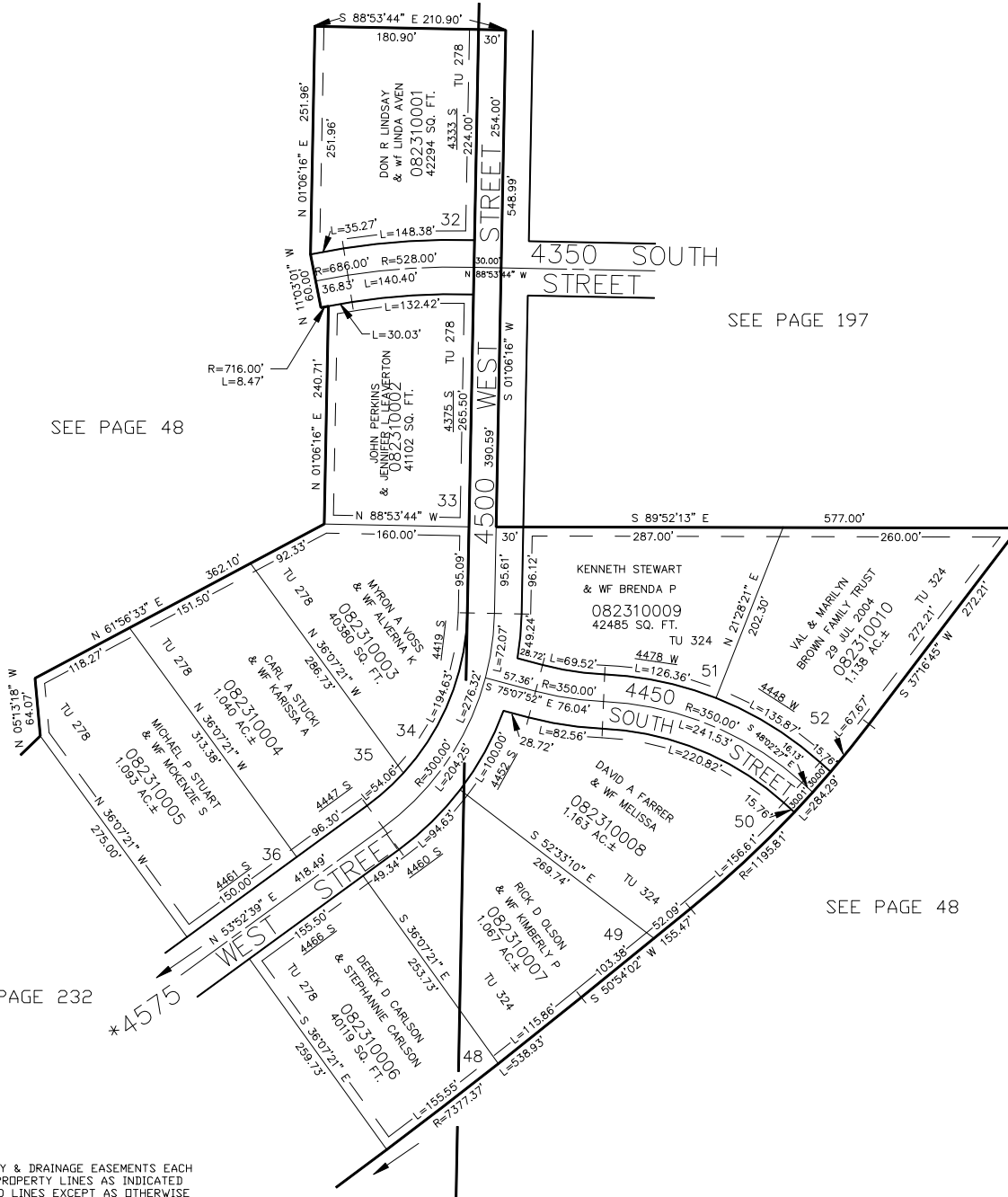
SEE PAGE 217

SEE PAGE 48

SEE PAGE 197

SEE PAGE 48

SEE PAGE 232



FOR COMPLETE ENG DATA SEE ORIGINAL DEDICATION PLAT IN BOOK 38, PAGE 83 OF RECORDS.

*ADDRESS CHANGE 29-APR-96 E# 1402571 BK 1803 PG 1984

10' UTILITY & DRAINAGE EASEMENTS EACH SIDE OF PROPERTY LINES AS INDICATED BY DASHED LINES EXCEPT AS OTHERWISE SHOWN.

*4575

FOR TAX PURPOSES ONLY